


East Baton Rouge Parish School System

A Southern Association of Colleges and Schools (SACS) Accredited District



2008 - 2013 STRATEGIC PLAN

BOLD GOAL


To become an exemplary pre-kindergarten through 12th-grade school system, with rigorous teaching and learning, where ALL students and adults meet high expectations.

5 Steps to Stars!

Our Plan to Achieve a 5-Star Label in the Louisiana Accountability System

- ★ GOAL 1: Increase Student Achievement
- ★ GOAL 2: Promote a Safe and Caring Environment
- ★ GOAL 3: Expand Student and Stakeholder Engagement
- ★ GOAL 4: Promote Effective and Efficient Internal Processes
- ★ GOAL 5: Maximize Employee Learning and Growth

B. Better Schools. Better Futures.



Vision

All East Baton Rouge Parish School System students will graduate with the knowledge, skills and values necessary to become active and successful members of a dynamic learning community.

Mission

The East Baton Rouge Parish School System, in partnership with our community, educates all students to their maximum potential in a caring, rigorous and safe environment.

B. Better Schools. Better Futures.

Accomplishments

2004 – 2005

- Benchmark Assessment Program
- CKAP Overage Program
- Comprehensive Curriculum
- Data Team Initiative
- Dual Enrollment with Community Colleges

2005 – 2006

- First District Strategic Plan
- Hurricane Katrina – welcomed over 7,000
- Quality Support Teams/Walkthroughs

2006 – 2007

- Advanced Placement - All High Schools
- Elementary Literacy Initiative

2007 – 2008

- Adolescent Literacy Initiative
- End of 51-year Desegregation Lawsuit
- Positive Behavior Support Program

2008-2009

- Hurricane Gustav – opened schools quickly
- Mathematics Initiative
- Truancy Initiative with EBR District Staff
- District Accreditation from SACS

2009-2010

- Superintendent John Dilworth arrives
- Science Initiative
- Three new charters approved by School Board

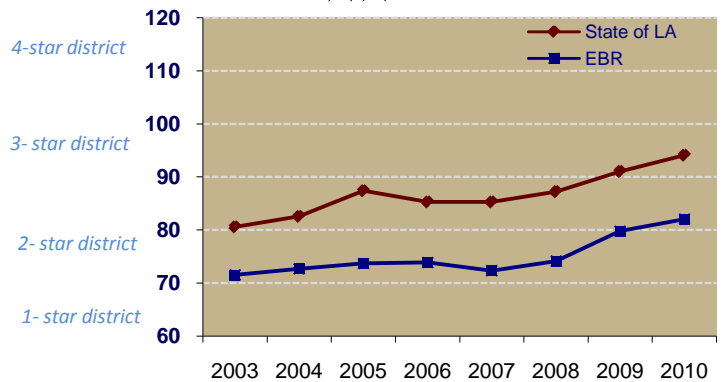
2010-2011

- Six schools released from state & federal sanctions
- Graduation Coaches at all high schools
- PD360 – Differentiated Professional Development

EBR earns two stars

District Performance Score **82.0**

☆☆ status

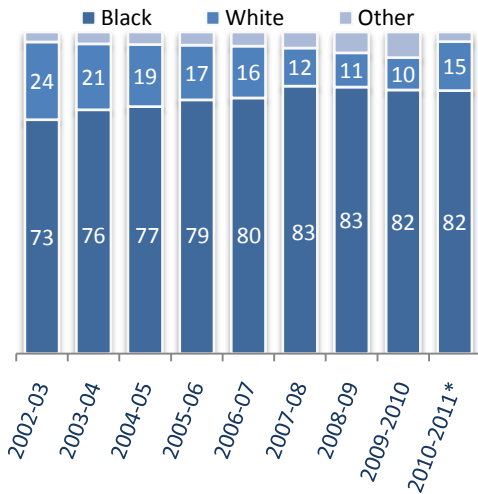
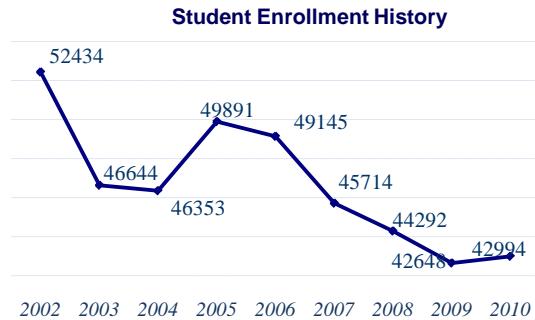
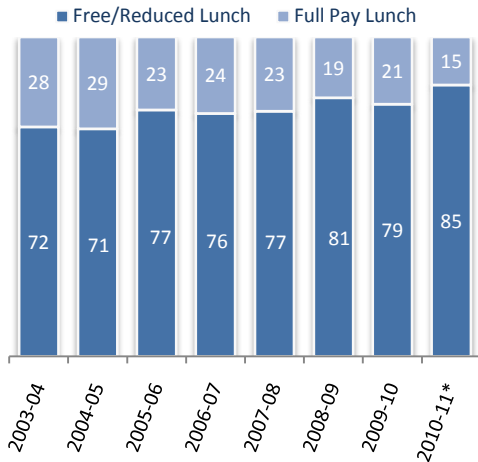


Blue Ribbon Schools

- Baton Rouge High
- Forest Heights Elementary
- Glasgow Middle
- McKinley Middle
- Northeast Elementary
- Ryan Elementary
- Shenandoah Elementary
- Sherwood Middle
- Westdale Heights Elementary



Student Demographics



In 2010-2011

- 43,000 Students
- 9.9% Students with Disabilities
- 2.7% English Language Learners.

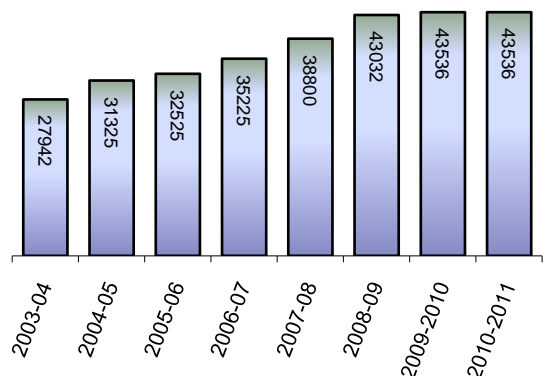


Employee Demographics

2010-2011 School Year

- 6,400 employees
- 86 schools and centers
- 98.5 % certified / highly qualified teachers
- 111 nationally board certified teachers
- 53% advanced degreed teachers

Beginning Teacher Salary

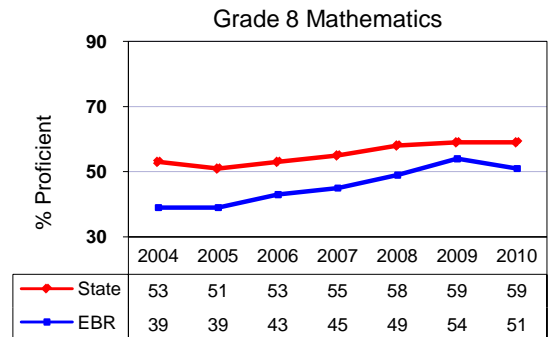
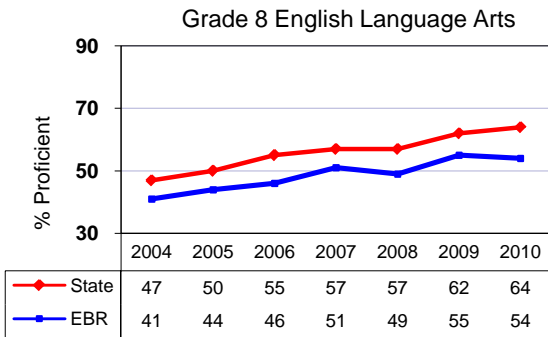
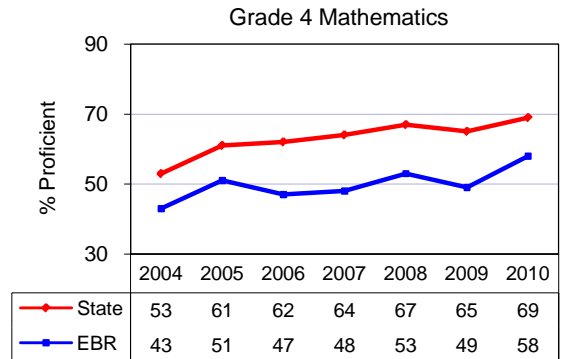
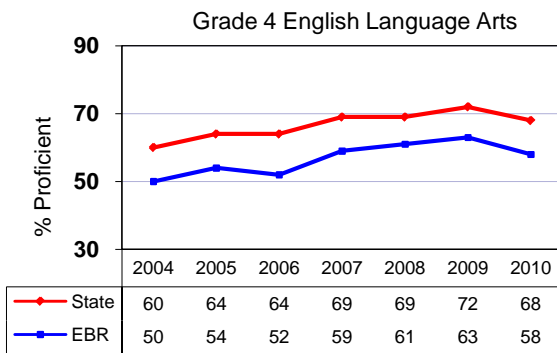




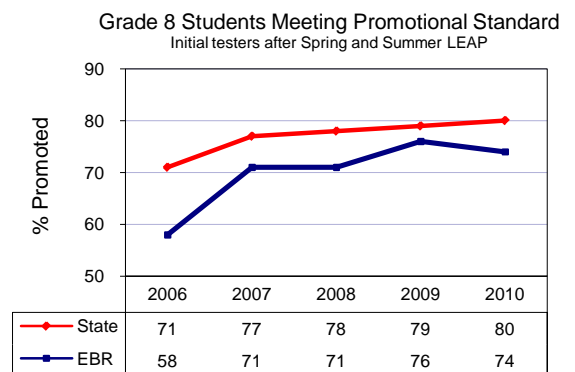
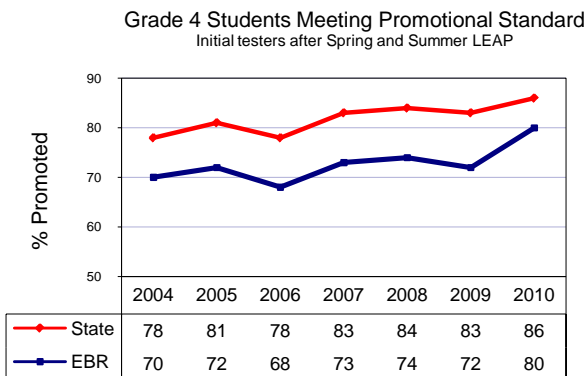
Louisiana Educational Assessment Program

Elementary and Middle Schools

In 2009-2010, we **improved in 18 of the 30** state tests given in grades 3 – 11. The gap between the state and the district narrowed in 70% of the tests. The following graphs represent the elementary and middle school proficiency rates for the high stakes LEAP tests. No Child Left Behind (NCLB) proficiency goal is 100% by 2014.



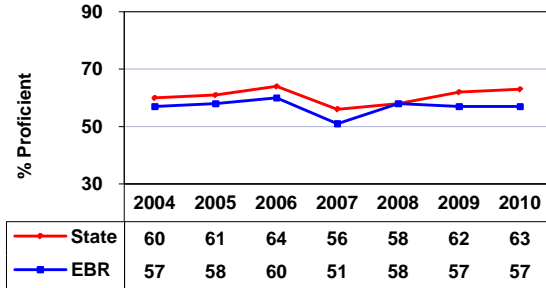
The following graphs represent the increase in elementary and middle school promotion rates for the high stakes tests at grades 4 and 8.



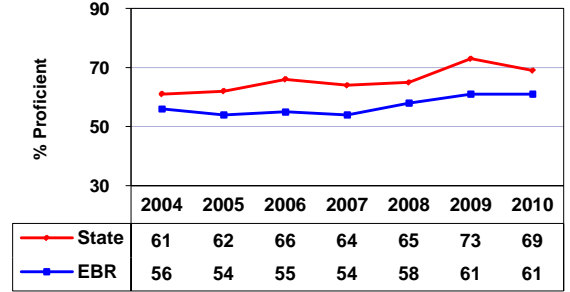
High School Data

Graduate Exit Exam - The following graphs represent proficiency rates for the high stakes tests initially given in Grades 10 and 11. NCLB goal is 100% proficiency for all by 2014.

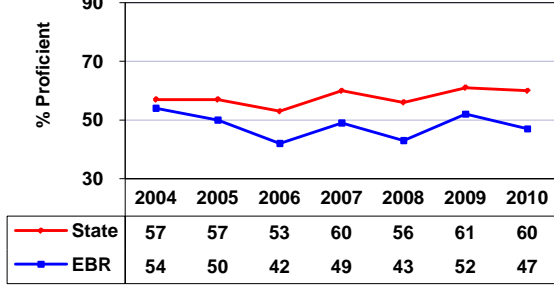
Graduate Exit Exam English Language Arts



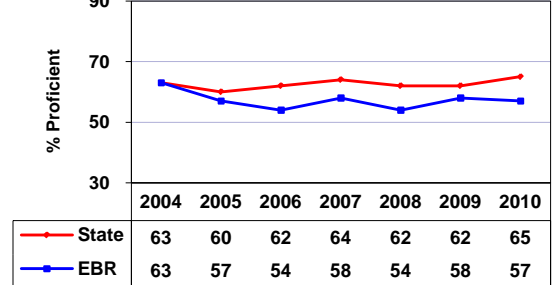
Graduate Exit Exam Mathematics



Graduate Exit Exam Science

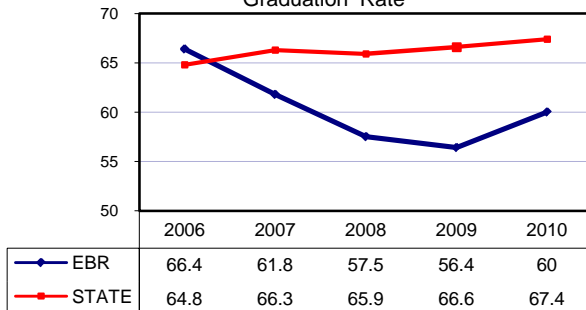


Graduate Exit Exam Social Studies



Graduation Rates – In 2010, 60% of our students graduated on-time. On-time students graduate four years after entering high school. Our data, while showing improvement, provides strong evidence for the need to explore high school options. With community support, this graduation rate will show improvement with the implementation of choices for our students.

Graduation Rate



ACT – Our 2010 composite scores for minorities continues to exceed the state and national composite.

	<u>African American</u>	<u>Asian American</u>	<u>Caucasian</u>
EBR	17.8	23.1	23.6
State	17.2	22.1	21.7
Nation	16.9	23.4	22.3

Average Composite Score
Score range 1 - 36

